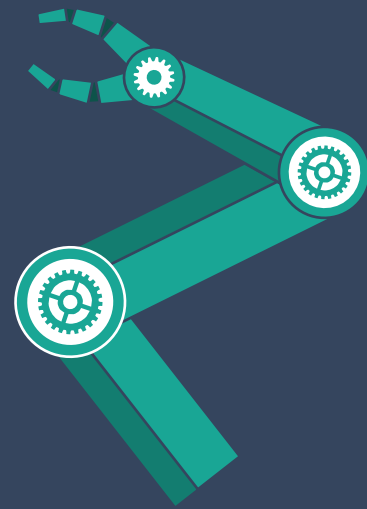


LIMPAHAN ENGINEERING

CORPORATE PROFILE
2022



Why Are We **HERE?**

Are you:

- an operation needing a fast design and development of mechanical components for your equipment or processes?
- an organization looking for a second expert opinion on mechanical components to ensure their fit and functions?
- a business requiring low or high volume mechanical components with strict dimensional tolerances?
- a manufacturer improving your mechanical jigs and tooling to assist your line productivity and efficiency?

Do you:

- worry about what kind of mechanical components could fit into your new system or equipment?
- run mechanical equipment (pumps, boilers and other machines) and are looking for a one-stop center to carry out predictive, preventative or reactive maintenance and mechanical fix on them?

If you are and if you do, then we are here for you.

We are an agile and innovative team of young experts focusing on delivering the following services and products to the local and regional customers:

- Design of mechanical components for bespoke applications.
- Development of mechanical components for fit and functions to suit your current systems.
- Pre-production study, verification and validation of mechanical integration within a design – stack-up tolerancing, fit to function, physical integration tests, etc.
- Design, development, prototyping of one-off mechanical component for R&D.
- Design, development, prototyping and low/high volume production of mechanical parts.
- Design, development, prototyping and production of mechanical jigs and tooling.
- Trouble-shooting, maintenance and fix mechanical systems (pumps, generators, engines & boilers) including fabrication of their mechanical spare-parts.

We are here to ensure that your organization could continue with your plans without letting your pain points of getting your hands on the mechanical components you need for your systems hinder you from achieving that goal. We are here to assist you to decide on the right mechanical components and tolerances for your systems. We are here to accelerate the delivery of your services, products and technology so that you could keep your competitive edge.

We are here take away your **WORRIES** so that you could **FOCUS** on what matters: **EXPANDING** your **BUSINESS!**



More importantly, we are here to walk the journey with you.
TOGETHER.

Table of CONTENTS

COMPANY INTRODUCTION & VISION

A brief on who we are – our core values and how we manage ourselves in the pursuit of EXCELLENCE

VALUE PROPOSITION FOR YOU

It is our MISSION to solve your PAIN POINTS and assist you to be SUSTAINABLE with our products

CORE COMPETENCIES & CAPABILITIES

A virtual tour into our operations – our people, core competencies, capabilities and equipment

QUALITY AND SAFETY ASSURANCE

Our approach to ensuring consistent QUALITY and SAFETY of our people and our products

PERFORMANCE AND TRACK RECORDS

What we have produced and are producing that have made us a partner of choice by our LOYAL CUSTOMERS



In the digital age we live in today,

a journey of a thousand miles,

could start with a single

..... **CLICK!**



Our CORE VALUES



“NILAI LIMPAHAN” is a set of corporate **Core Values** which firmly plants the foundation to the philosophy, vision and mission of Limpahan Engineering. “NILAI LIMPAHAN” are the values we believe in, we embrace, we demonstrate and we practice in our daily activities. It is our corporate culture upon which we will build and sustain our strong brand. “SIIQAP”.



SAFETY

We keep our stakeholders safe. Our loved ones shall have peace of mind at all time.

Everybody Returns Home Safely



INTEGRITY

We execute our duties with utmost integrity. We do the right thing even when nobody's watching.

There is only Black or White



INNOVATION

We explore new ways of succeeding together with our stakeholders without the fear of failure.

Sky is The Limit.



QUALITY

We aspire to consistently meet all stakeholders' expectations. Our People employ the best Process & Technology.
Do it Right The First Time, All The Time



AGILITY

We are responsive to our stakeholders' needs. We push boundaries. There is no constraint to what we can do.

Everything is Possible



PEOPLE

We treasure our people. We develop and we unlock their potential. We are a team aligned to a common cause.
A United Family Triumph Together

Our LEADERSHIP



Dato' Naza Haron
Chairman
Key Strategist & Pathfinder
Vision & Mission



Kamarul Hafiz
Managing Director
Key Tactical Planner
Financing
Decision-making
Sustainability



Sukri
Head, Technical & Production
Key Technical Expert
Production Management
Product Development
Equipment Productive Maintenance
Facility Management



Hakimi
Head, QHSE
Key Organizational Expert
Risk Management
Process Development
Digitalization Management
Training & Development
Supply Chain

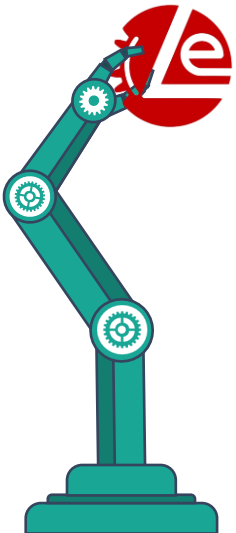


Afifah
Head, Corporate Services
Key Organizational Support
Finance & Accounting
Human Resources
Employee Compensation & Benefits
Information Technology
Procurement

Our MISSION

We Aspire to be a **KEY PLAYER** in
Assisting the National Agenda to
Move Towards a **DEVELOPED**
NATION.

We Plan to **DO** This by Solving the
Mechanical Components **PAIN**
POINTS of the **INDUSTRY**
Players.



Our VALUE PROPOSITION



1

TECHNOLOGY COLLABORATION

PROTOTYPING



RESEARCH & DEVELOPMENT



TOOLING DEVELOPMENT



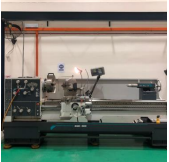
TOOLING FOR HIGH-PRECISION PARTS



REVERSE ENGINEERING



TOOLING FOR GENERAL PARTS



WE COLLABORATE WITH YOU ON YOUR NEW TECHNOLOGY

Our experts could develop efficient and effective Preventive, Predictive or Prescriptive Maintenance activities. We can also develop bespoke Augmented Reality-Assisted Productive Maintenance on-site for you! (ARMS)

2

PRODUCTION PARTNER

TIGHT TOLERANCE INSPECTIONS & PROCESS CAPABILITY STUDIES



PRODUCT MECHANICAL INSPECTIONS



VOLUME MANUFACTURING



LOW OR HIGH-VOLUME PRODUCTION



VMI CONTACTLESS AND CONTACT MEASUREMENTS



ONE-OFF PRODUCTION / BESPOKE PRODUCT



WE ASSIST YOUR PRODUCTION & OPERATIONS

Our experts could design and develop mechanical products customized to your operation's needs. We are capable to run a one-off product, bespoke products or reverse-engineered products in low or high volume mode. All, customized to your operation's requirements and limitations.



Our VALUE PROPOSITION

3 EQUIPMENT REPAIR & MAINTENANCE

TROUBLE-SHOOTING



REPAIR & SPARE PARTS

EQUIPMENT ON-SITE REPAIR



EQUIPMENT MAINTENANCE



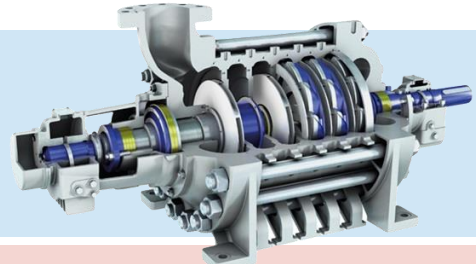
PRODUCTIVE MAINTENANCE



AUGMENTED REALITY-ASSISTED MAINTENANCE SYSTEM (ARMS)

Pumps, Generators, Engines, Boilers

- Mechanical Emergency Fix
- Mechanical Spare Parts Fabrication
- Mechanical Productive Maintenance
- Mechanical System IoT Monitoring

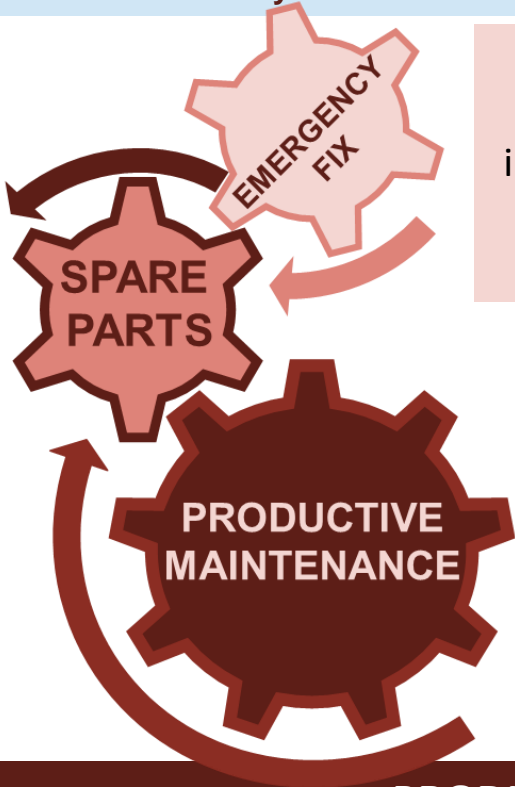


24-HOUR ON-SITE TECHNICAL SUPPORT

We provide 24-hour technical support to investigate, propose solution, execute fix, testing, inspection and review maintenance program for your on-site systems.

FAST SPARE PARTS FABRICATION

Our in-house machining and fabrication factory provides research & development, reverse engineering, low & high volume manufacturing of mechanical parts and tooling, as well as prototyping or one-off jobs.



PRODUCTIVE MAINTENANCE

Our experts could develop efficient and effective Preventive, Predictive or Prescriptive Maintenance activities. We can also develop bespoke Augmented Reality-Assisted Productive Maintenance on-site for you! (ARMS)

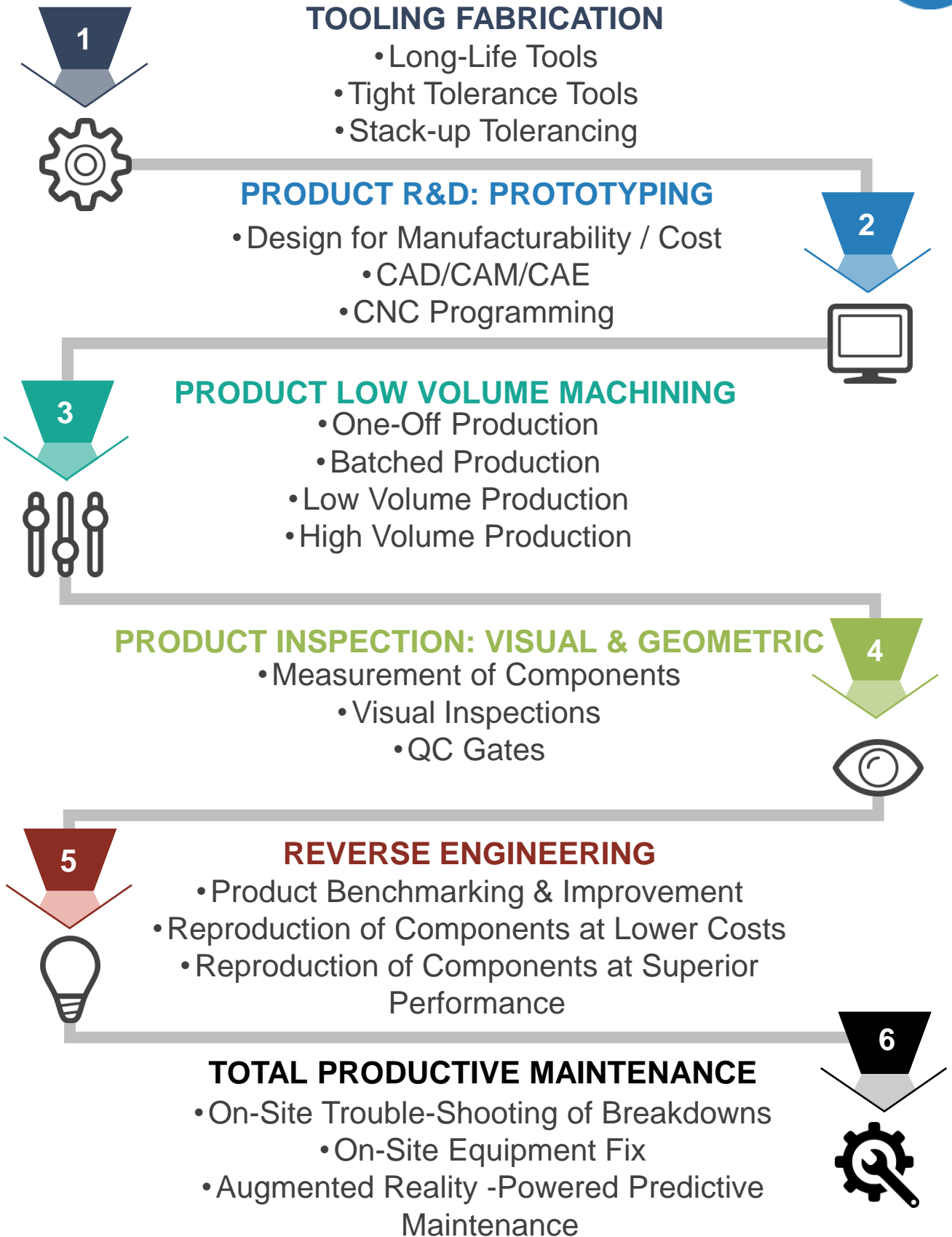
SYSTEM MONITORING

With IoT, Cloud and Sensors technologies brought about by IR4.0, we could help you to monitor the condition of your mechanical systems on the palm of your hands!



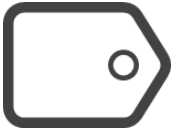


Our CORE COMPETENCIES



We Provide Real **SOLUTIONS** to
Your Real-World **PROBLEMS**

Our SERVICE TURNAROUND



Service Commitment (Days)

01

TOOLING FABRICATION

- Long-Life Tools
- Stack-up Tolerancing

02

PRODUCT R&D: PROTOTYPING

- Design for Manufacturability
- CAD/CAM/CAE
- CNC Programming

03

PRODUCT LOW VOLUME MACHINING

- One-Off Production
- Batched Production
- Low Volume Production
- High Volume Production

04

PRODUCT INSPECTION: VISUAL & GEOMETRIC

- Measurement of Components
- Visual Inspections
- QC Gates

05

REVERSE ENGINEERING

- Re-produce Components at Lower Costs

Preliminary Study	1-3	3-7	3-7	1-2	1-5
Official Quotation	1-4	4-8	4-8	1-3	2-6
Prototype or First Article	5-30	5-30	5-30	Data:1-4	3-20
Volume Production	10-40	6-40	10-40	Data: >3	10-40

We Get You **ANSWERS** You Needed When You Need It. **ON TIME**

• Governance & **Integrated Management System**



Our Management Systems have been designed to demonstrate our Core Values



Latest Capability – MACHINING



Superb Capabilities
40 Taper Mill
3-Axis
30+1 Tool Capacity
Auger Style Chip Conveyor

High Speed Spindle
12,000 RPM
Super Speed Side-Mount Tool Change

Proven Quality
Fast Local Support
Spare Parts Availability
Easy Upgrade

Internet of Things (IoT)
IoT Ready. Just Connect, making our journey towards DIGITALIZATION a breeze.

Made in USA | High Performance | High Speed | Internet-Ready

Haas VF-2SS

Superb Capabilities
Larger Spindle Bore for Increased Bar Capacity
40 Taper Mill
3-Axis
30+1 Tool Capacity
New Castings – More Compact & More Rigid

High Speed Spindle
Auto Door
12,000 RPM
Super Speed Side-Mount Tool Change
Increased Z-Axis Travel
11% Smaller than Predecessor

Proven Quality
Fast Local Support
Spare Parts Availability
Easy Upgrade

Internet of Things (IoT)
IoT Ready. Just Connect, making our journey towards DIGITALIZATION a breeze.

Made in USA | High Performance | High Speed | Internet-Ready

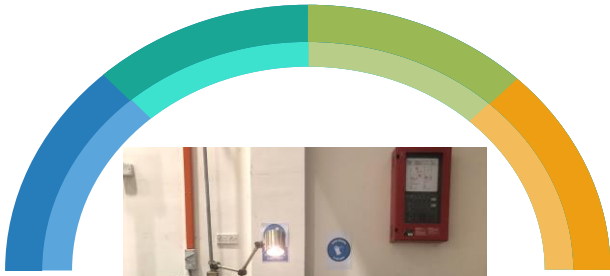
Haas ST-20Y

We Use Latest **TECHNOLOGIES** to Give You Consistent **QUALITY**

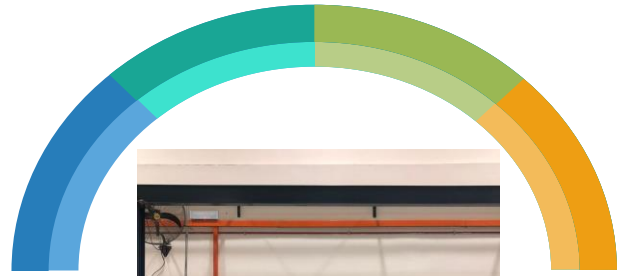
Proven Capability – FABRICATION



COLCHESTER MASTER LATHE



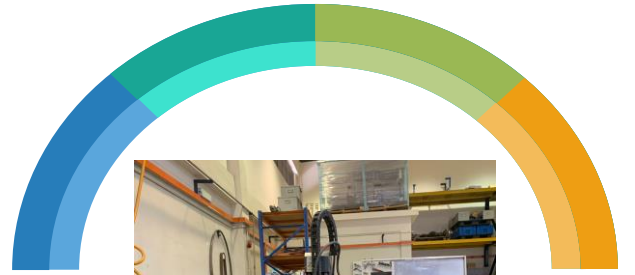
DMTG FLATBED LATHE



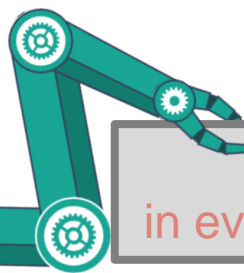
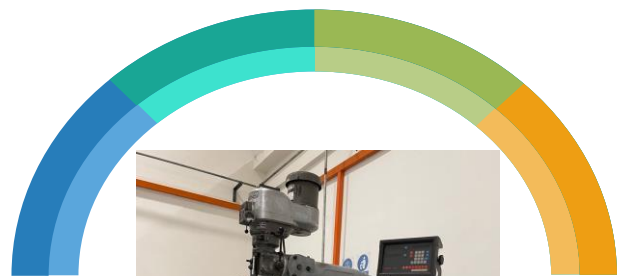
HARRISON M300 CENTER LATHE



CNC PLASMA MEGASONIC



BRIDGEPORT MILL



INNOVATION
in every **FABRICATION**

With **TECHNOLOGY**, we find new ways to do things **BETTER**, even on old equipment.

Proven Capability – METAL SHOP



FRONIUS TIG WELDER



ESAB EMP215ic WELDER



VERTICAL BAND SAW



HORIZONTAL BAND SAW



WKM BELT DISC SANDER

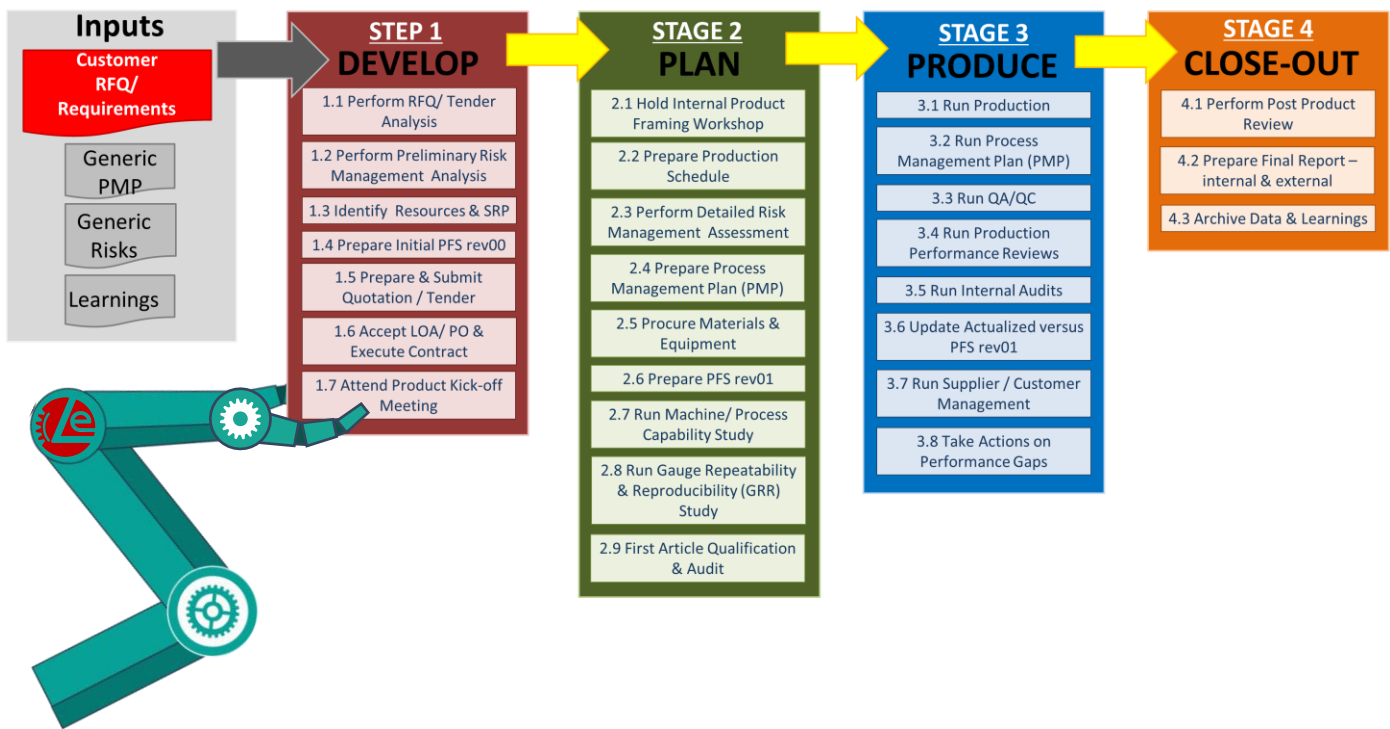


AGILITY in
everything **METAL**

Tell us what you need
and we will turn **METALS**
into products worth being
on a **PEDESTAL!**

• Governance & IMS: Product Lifecycle Process

Our Processes Have Been Designed, Developed and Implemented to Ensure CONSISTENT Delivery of QUALITY.



Our Methods, Equipment Maintenance, Facility Management and Work Procedures Have Been Designed, Developed and Implemented to ensure All Products and Services Could be Produced in the SAFEST Manner to Consistently Meet Requirements.





OUR PRODUCT REACH – Crossing Boundaries

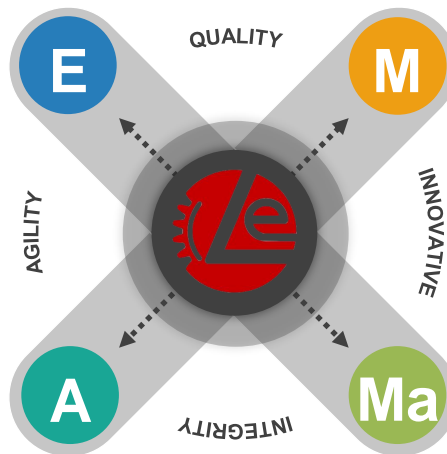
ENERGY INDUSTRY – OIL & GAS

Stainless Steel Gear
Tolerance: +/- 100 microns
Batched Production



MANUFACTURING INDUSTRY

Aluminium Base Plate
Tolerance: +/-50 microns
Batched Production



AVIATION/AUTOMOBILE INDUSTRY

Stainless Steel
Tolerance: +/- 100 micron
Batched Production

MARINE INDUSTRY

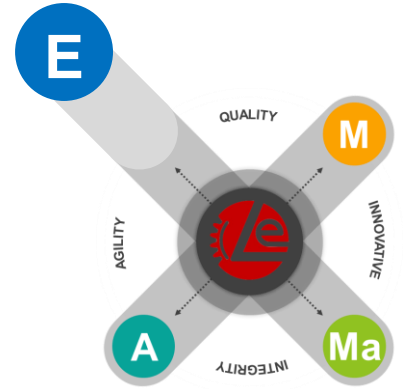
Teflon Propeller Fitting
Tolerance: +/-20 microns
Batched

Our **KNOW-HOW**
Transcends **INDUSTRIES**

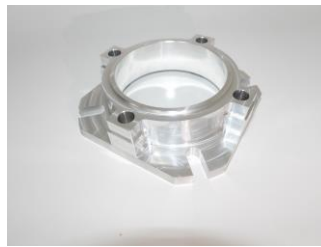
OUR PRODUCT REACH – Crossing Boundaries



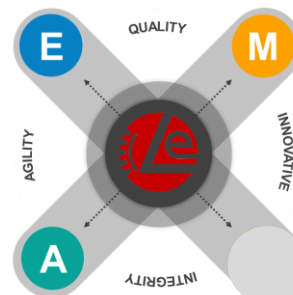
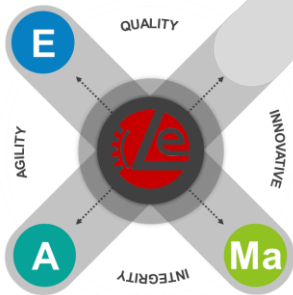
ENERGY



MANUFACTURING



TOLERANCE: +/-1MICRON (0.000001M)



MARINE



AVIATION



AUTOMOBILE



Our **QUALITY** Retains **LOYAL CUSTOMERS**

Come and Talk to Us to Explore How We Can Help You To Solve Your Challenges and Pain Points



Manufacturing Site / East Region:

Limpahan Engineering Sdn. Bhd.,
PKINK, Kilang IKS, Lot 5087A,
Jalan Padang Tembak, Kawasan Perindustrian 2,
16100 PENKALAN CHEPA.



Sales Office / West Region:

Limpahan Engineering Sdn. Bhd.,
D-3A-05, Block D, Oasis Square,
Ara Damansara,
47301 PETALING JAYA



www.limpahanengineering.com

www.limpahaneramas.com

www.33worx.com

Focused in Producing High Precision Machined Components for Energy,
Manufacturing, Marine and Aviation Industries.